



Data Credits:
 [Parcels] Whatcom County 2018
 [Roads] COB 2018
 [Imagery] Whatcom 2019

- Subject Parcels
- Hand Auger
- Base of GHA Slope
- Crest of GHA Slope
- 10ft Assumed Buffer from GHAs
- 10ft Contour
- 2ft Contour

Percent Slope

Value	Color
0 - 15	Light Green
15 - 30	Yellow-Green
30 - 40	Yellow
40 - 65	Orange
65 - 100	Red



1:350

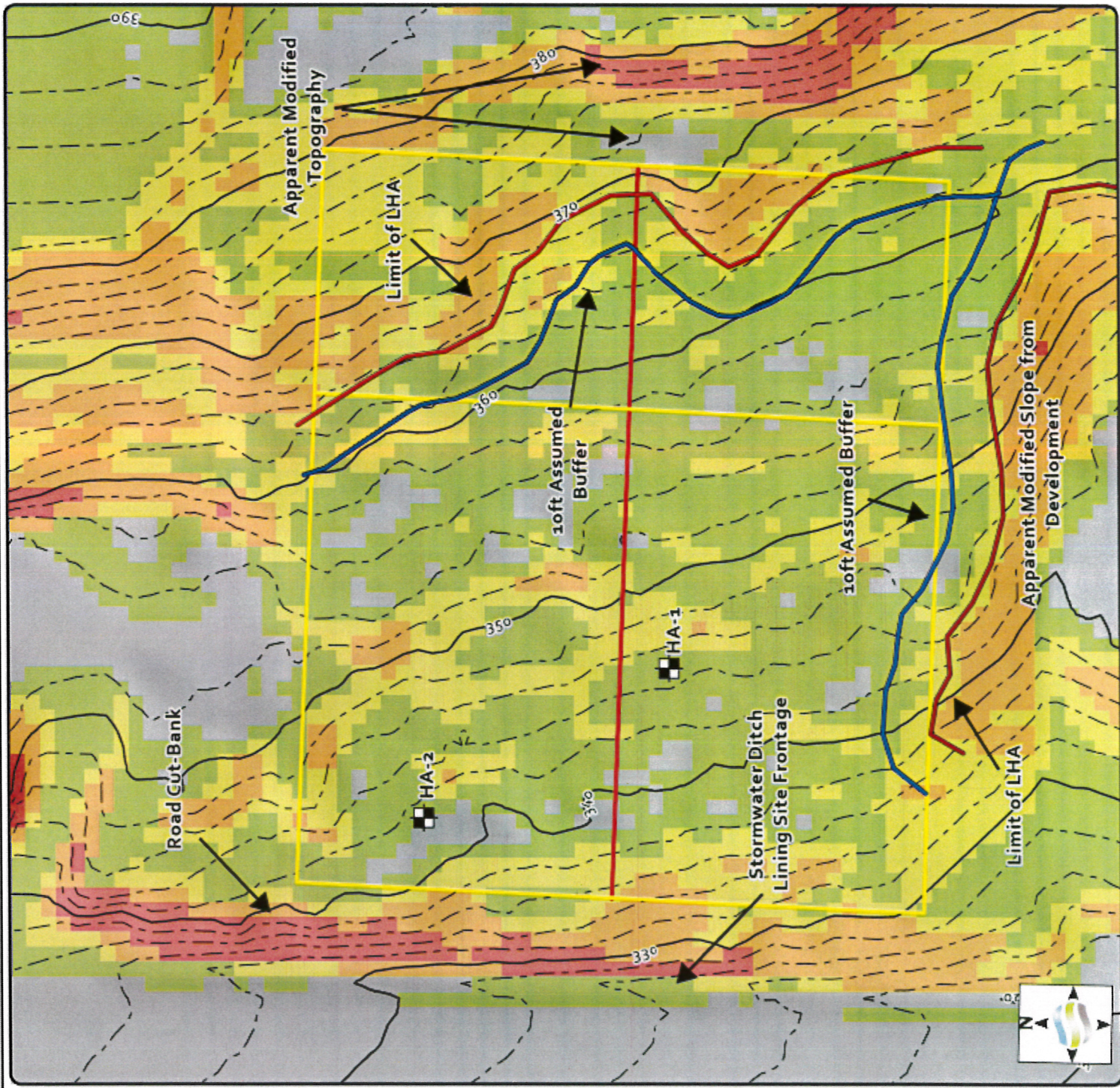


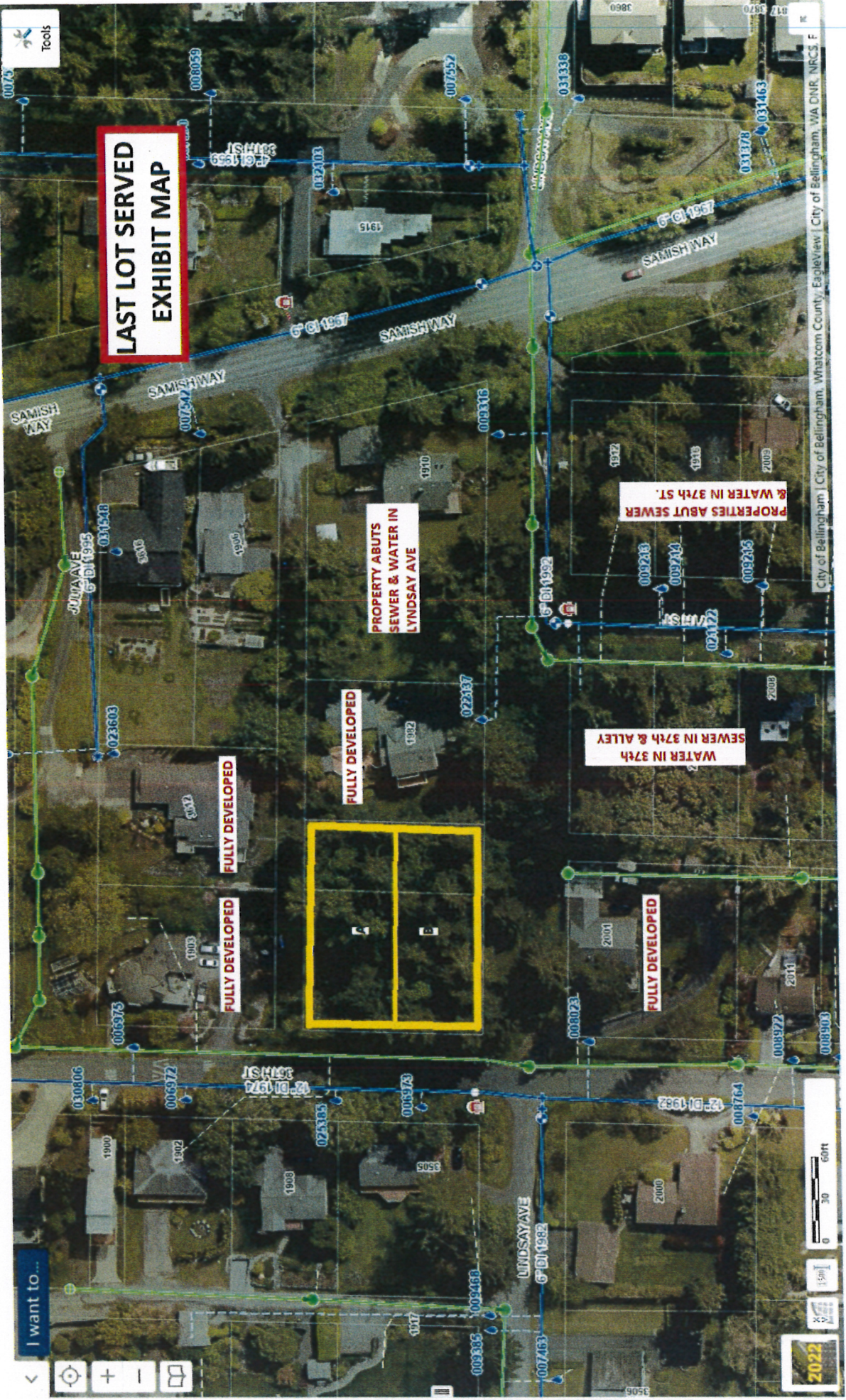
909 Squallicum Way, Ste 111
 Bellingham, WA 98225
 info@elementsolutions.org
 Phone: 360.671.9172

This document has been prepared by Element Solutions for the exclusive use and benefit of the Client. The entire party is notified by reference to the information provided by or on behalf of the map. The map is compiled from a variety of data obtained from publicly available Geographic Information Systems (GIS) databases, from data collected by other Element Solutions staff or clients, or from other sources. Element Solutions does not warrant the accuracy of the information or the accuracy of the data obtained from the GIS data. GIS data provided is based on the best available information, and data obtained by other means.

Figure 3
 36th Street Geohazard Assessment
 36th Street, Bellingham, WA
 LIDAR Percent Slope Map

Date: 3/27/2024





**LAST LOT SERVED
EXHIBIT MAP**

**PROPERTY ABUTS
SEWER & WATER IN
LYNDsay AVE**

FULLY DEVELOPED

FULLY DEVELOPED

FULLY DEVELOPED

**PROPERTIES ABUT SEWER
& WATER IN 37th ST.**

**SEWER IN 37th & ALLEY
WATER IN 37th**

FULLY DEVELOPED

I want to...



2022